

Bayside Presbyterian Church Building Phases – for our present location of 1400 Ewell Road

Vision II (Initial Construction): 1964

- Pastor: Rev. John E. Johnson
- Plot of land: 5 acres valued at \$17,000; recorded in Deed Book 677, Page 602. Was a gift from Norfolk Presbytery (now called Presbytery of Eastern Virginia).
- Financed through the sale of \$112,750 in bonds (mostly to church members) offering interest of 5%; along with a bank loan of \$60,000 at 6% interest. Also used the proceeds from the sale of the previous church building (intersection of Bradford and Rutherford Roads) to Gospel Assembly Church for \$30,000. Sale of old church took place March 3, 1964.
- Total indebtedness was about \$255,000.
- Groundbreaking – August 18, 1963; Mrs. William Graham, Jr., President of the Women of the Church (now called Presbyterian Women) turned the first spadeful of dirt. Total membership at that time: 227.
- William N. Stokes was the Chairman of the Building Committee; Virgil M. Hopkins was the Associate Chairman of the Building Committee; J. A. Holland was the Chairman of Finance; Williams & Tazewell were the Architects; J. L. Smith Corp. was the General Contractor; Winebarger Corporation was in charge of pews and pulpit furniture.
- Cornerstone laid on June 21, 1964 – the first Sunday we occupied the church
- Building dedicated on July 12, 1964

AsThe 1964 footprint was essentially a “T” shape (see picture below) – a smaller Sanctuary in the middle with wings on either side for the classrooms/offices. The Sanctuary had a capacity of about 420 on the main floor. It was not as large as it is today – just the two main columns of benches, not four. The Sanctuary had a choir loft but it was only accessible through a stairway in the Narthex. The only deviation to this T-shape was the Fellowship Hall which jutted out from the wing on the Ewell Road side of the building. The Fellowship Hall was then an open space in what we currently use as partitioned class/meeting rooms opposite our current kitchen. There were 18 classrooms. The office was where the Library is now, and the Minister’s office was where the Bride’s room is now. The kitchen was next to the Boiler room in the room where we now store tables and chairs. There was no air conditioning in the building. There were only two sets of men’s/women’s bathrooms – one set in each wing. In viewing an aerial picture of the building, it appears that only the two “inner” parking lots (closest to the church) were paved.



What the Future Holds for-



BAYSIDE PRESBYTERIAN CHURCH

... Friends of Bayside Presbyterian Church:

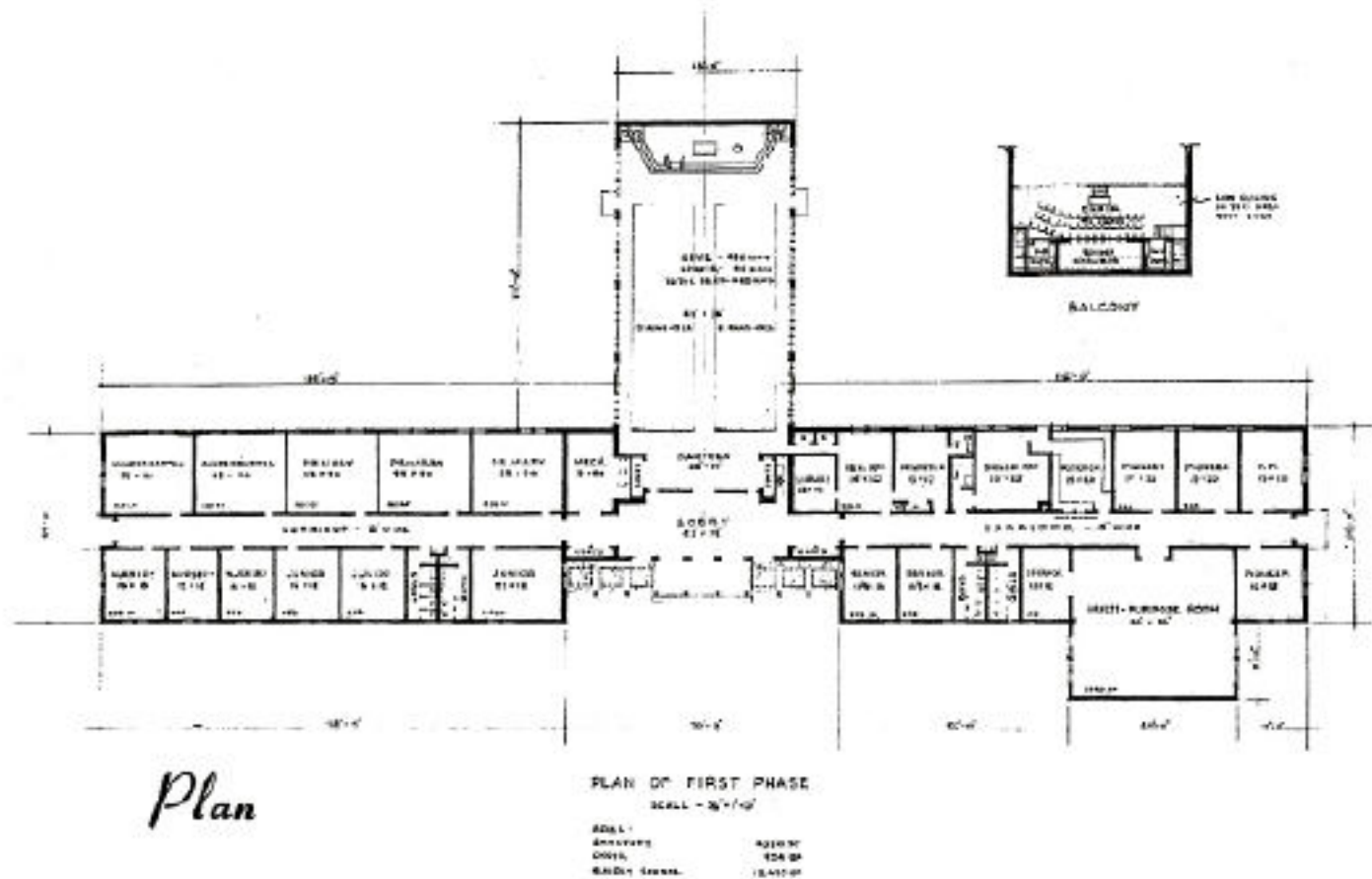
We have opportunity to express our love and loyalty to Christ and His Church by supporting our new building plans in:

1. Special gifts to the building fund in addition to our gifts to the general fund and benevolences.
2. Memorials (to be discussed with the minister if desired).
3. The purchase of church investment bonds which will earn 5% interest for the investor. Bonds will be available at \$5000, \$1000, \$500, \$250, \$100, and \$50, to be selected from accompanying lists.

Investment bonds are negotiable instruments and may be traded, sold, given away or deposited as collateral by the owner. They are legal and binding obligations on the part of the church to repay a certain amount at a specified time. Coupons are detachable and may be cashed when interest is due. A sinking fund will be set up to handle the bonds for anyone in special emergency.

Some are using their borrowing power at the bank or with insurance policies to assist in this worthy cause at no cost to themselves. They are able to borrow at 5% or less; and they will receive 5% interest on the church bonds.

We earnestly hope that every family will participate in this special effort to witness for Christ in this area.



Facts about the Building.

I. SANCTUARY

- a. Size 45'-0" x 96'-0"
- b. Seating Capacity

Main Floor	420
Choir	40
Total	460
- c. Expandable in future to seat 634
- d. Provisions will be made for future air conditioning

II. EDUCATIONAL SPACE

- a. 18 Classrooms
- b. Will accommodate 350 - 400 pupils
- c. Expandable in future to accommodate 600 - 700 pupils

III. FELLOWSHIP SPACE

- a. Room Size 40'-0" x 36'-0"
- b. Will accommodate 150 people seated at tables
- c. Expandable in future to accommodate 250 people at tables and provide a stage.

IV. OFFICE SPACE

- a. Minister's Study 13'-0" x 17'-0"
- b. General Office 14'-0" x 20'-0"
- c. Library 13'-0" x 14'-0"

Groundbreaking –August 18, 1963



Church Dedication (July 12, 1964)



Bayside Presbyterian Church
1964
Church History.

SERVICE OF DEDICATION

of the

BAYSIDE PRESBYTERIAN CHURCH

Ewell Road at Independence Boulevard

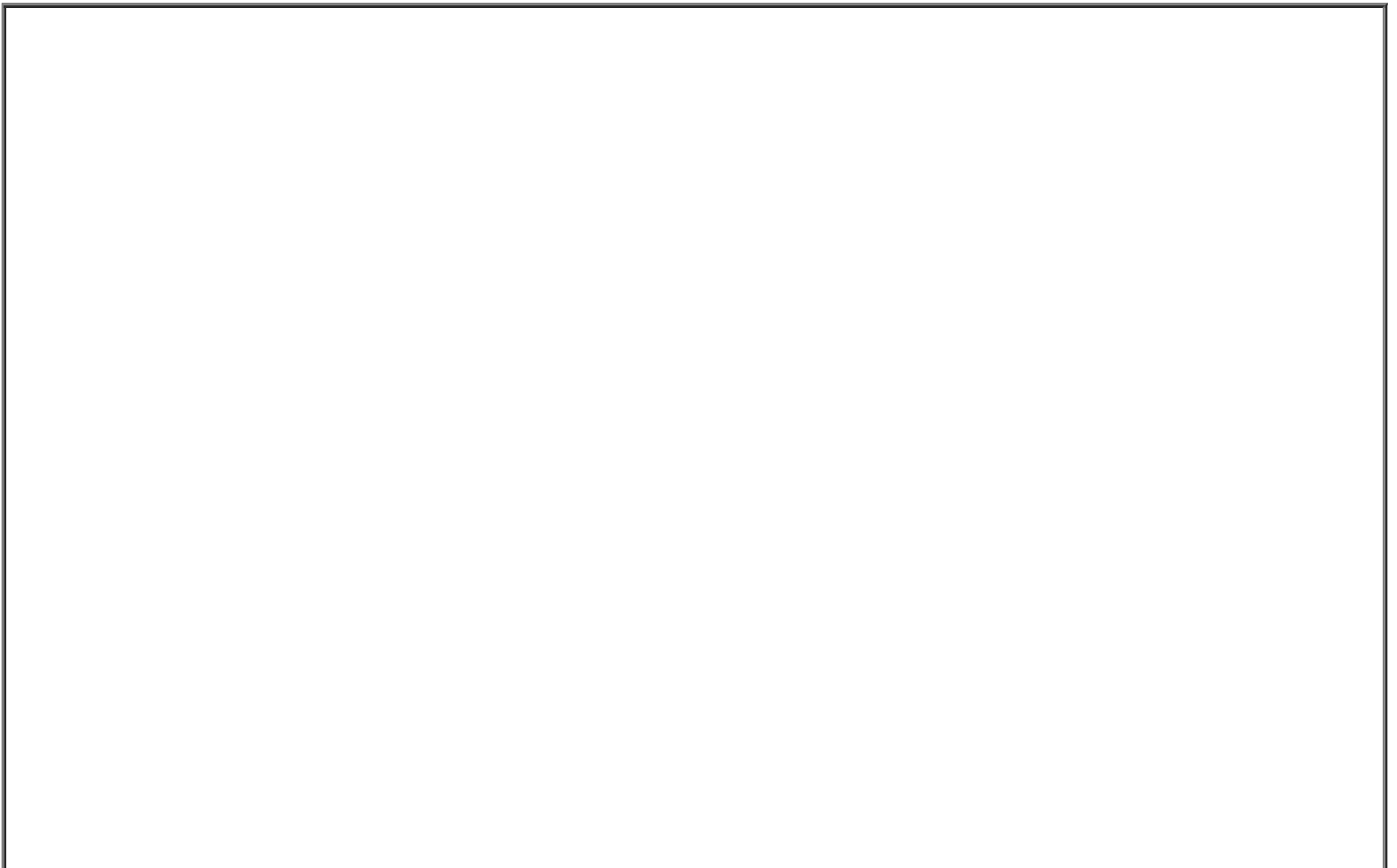
Virginia Beach, Virginia

July 12, 1964

Eleven O'clock in the Morning

J. E. JOHNSON, *Minister*

A day to be remembered!



THE SERVICE OF DEDICATION

THE ORGAN PRELUDE—"O Hear the Joyful Tidings!" **Book**
Mrs. Roy A. Taylor, Organist

THE CALL TO WORSHIP

THE PROCESSIONAL HYMN **No. 558**

INVOCATION AND THE LORD'S PRAYER

Please remain standing and join in the 100th Psalm:

Make a joyful noise to the Lord, all the land!
Serve the Lord with gladness!
Come into his presence with singing!
Know that the Lord is God!
It is he that made us, and we are his;
We are his people, and the sheep of his pasture.
Enter his gates with thanksgiving, and his courts with praise!
Give thanks to him, bless his name!
For the Lord is good; his steadfast love endures forever,
And his faithfulness is in all generations.

THE GLORIA PATRI

Please remain standing for the creed:

I believe in God the Father Almighty, Maker of Heaven and Earth,
and in Jesus Christ, His only Son our Lord, Who was conceived by
the Holy Ghost, born of the Virgin Mary, suffered under Pontius
Pilate, was crucified, dead and buried; He descended into hell; the
third day He rose again from the dead; He ascended into Heaven
and sitteth on the right hand of God the Father Almighty; from
thence He shall come to judge the quick and the dead.
I believe in the Holy Ghost, the Holy Catholic Church, the Com-
munion of Saints, the forgiveness of sins, the resurrection of the
body, and the life everlasting. Amen.

THE OLD TESTAMENT LESSON: I Kings 8:22-30

THE CALL TO PRAYER

ANTHEM BY THE CHOIR: "Built on the Rock" *Leaving M. Lindeman*
Mr. Chauncey German, Guest Soloist

PRESENTATION OF TITHES AND OFFERINGS

THE DOXOLOGY AND THE DEDICATORY PRAYER

Please remain standing for the Litany of Dedication:

Minister: *To the glory of God, and of His Son, Jesus Christ our Lord,*

People: *We dedicate this church.*

Minister: *To the end that the gospel of Jesus Christ may be proclaimed to
the saving grace of all peoples,*

People: *We dedicate this church.*

Minister: *In a place where the children of God may come, seeking pardon
from sin, comfort in sorrow, inspiration and spiritual power to
face life and its tasks,*

People: *We dedicate this church.*

Minister: *To the end that love may dwell in human hearts and that
people may live in peace, with justice, honor and dignity,*

People: *We dedicate this church.*

Minister: *To the end that the Church of Jesus Christ on Earth may be
one, even as God the Father, God the Son, and God the Holy
Spirit are One,*

People: *We dedicate this church.*

Minister: *Let us pray:*

All: *O most gracious God, whose the Heavens of Heaven cannot contain;
graciously accept the dedication of this place to Thy ser-
vice; and grant that all who will call upon Thee here may wor-
ship Thee in spirit and truth, and stay in their lives thine
Thy praise; through Jesus Christ our Lord. Amen.*

HYMN **No. 559**

THE NEW TESTAMENT LESSON: Ephesians 4:11-16

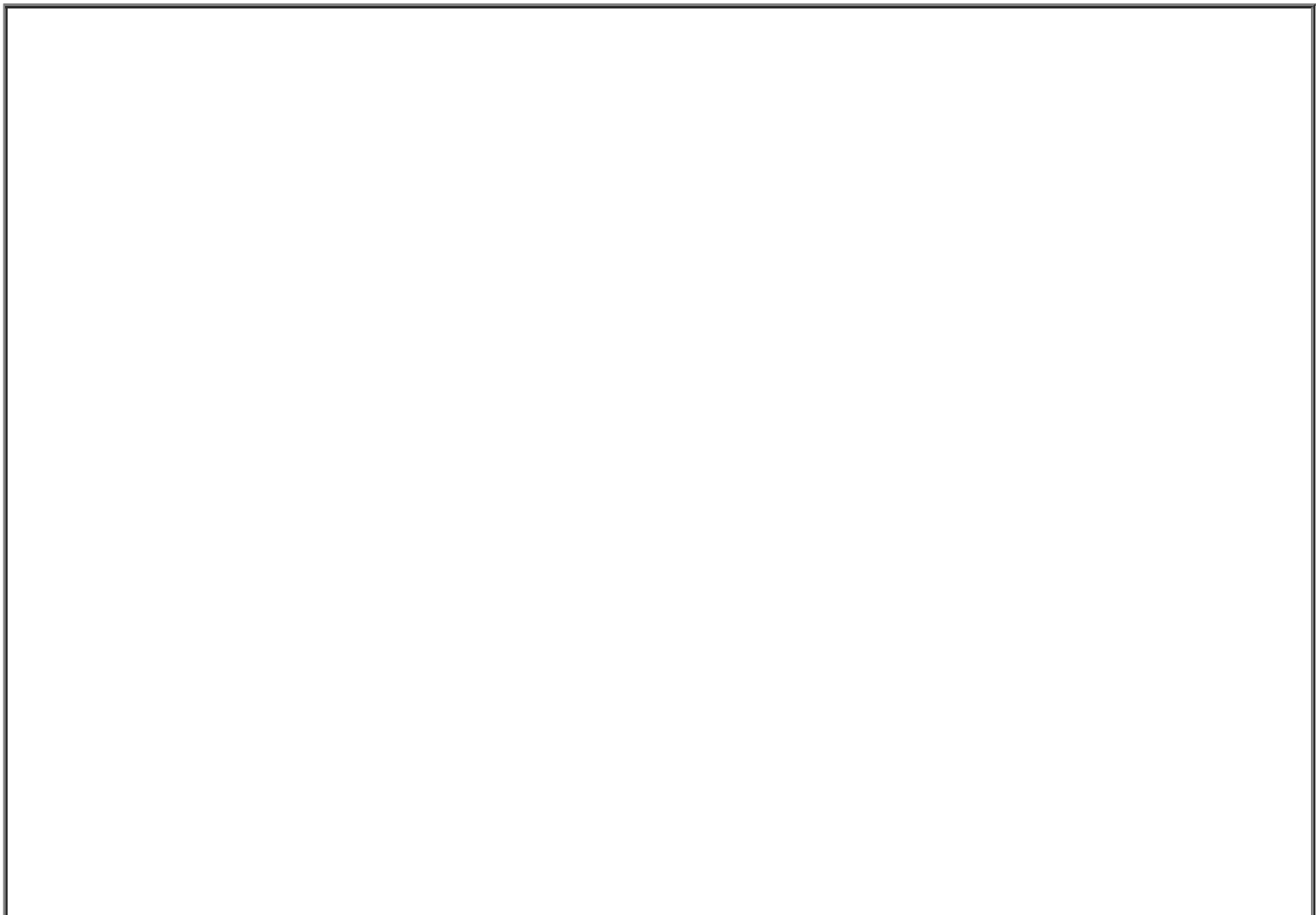
THE SERMON: "The Church's Marching Orders"
The Rev. Samuel D. McCammon, Jr.
Executive Secretary, the Presbytery of Norfolk

HYMN **No. 490**

THE POSTLUDE

The flowers in the Sanctuary this morning were given by Mr. and Mrs. H. Warren
Cooper, in the Glory of God and in memory of loved ones.

Architectural Description



Bayside Presbyterian Church

1400 Ewell Road

Virginia Beach, Virginia



OUR NEW CHURCH

Our new church is of contemporary architecture in which the best of the past is combined with materials of the present to meet the needs of the present in preparation for the future. Preliminary to our plans, a careful study was made of THE ARCHITECTURAL SETTING FOR REFORMED WORSHIP, prepared by James H. Nichols and Leonard J. Trinterud, and published by the Presbytery of Chicago, United Presbyterian Church, USA. Copies of this are in our church library.

The cross in the sanctuary is of gold leaf. The Celtic Cross is the distinguishing mark of a Presbyterian church. The circle—the endless circle—is the symbol of eternal life and of God's unending love. The cross is the symbol of Christ's redemptive love.

The planters on either side bring life into the sanctuary from God's creation.

The lattices and crossbars rise above the planters to accentuate the height of the central panel and to emphasize the cross.

The Latin word for lattices is "cancelli" from which comes our word "chancel". In early churches the chancel was enclosed with lattices or crossbars. It is that part of the church reserved for the clergy; it is all of that part of the church which is beyond the nave.

In our new church there is added significance in where the lattices are placed. Instead of separating the minister from the congregation, they are placed in the background, allowing the minister to be closer to the congregation. Still, the lattices give their name to the chancel area.

The Holy Table, or Communion Table, is a reminder of the presence of Christ in the breaking of bread together. The Sacrament of the Lord's Supper was instituted by Christ "on the night in which He was betrayed" In most Presbyterian churches this sacrament is celebrated on the first Sunday of each quarter. However, the Bread of Life in the Word of God is broken each Sabbath. The Holy Table is a symbol of God's grace as it comes to us through Christ.

The baptismal font is designed in the form of a dove in flight. The dove is the symbol of the Holy Spirit which descended upon Jesus at baptism. (Matthew 3:16) The Holy Spirit represents the new life from baptism into the Church of Jesus Christ.

The pulpit is designed as the bow of

a ship or boat. In maritime nations, like Norway and Sweden, the pulpits in churches are designed like the bow of a ship. Ours is the greatest maritime nation of all time. Our church is situated near where ships from all parts of the world come and go. Some of the members of our congregation "go down to the sea in ships". All of this makes the design of our pulpit very significant. Most significant, however, is that it resembles Peter's boat. (Luke 5:1-11) Could anything be more fitting, more traditional, than a pulpit shaped like Peter's boat from which Jesus preached and taught the people on the beach. Peter's boat is older than the cross and the Holy Table. Note also that the pulpit resembles hands at prayer. So, too, does the roof of the church.

The letters IHS in the antependium, or pulpit covering, are the first three letters of the name JESUS in Greek. (The Greek letter for our 'e' is written like our 'h'.)

A church was once likened to a ship turned upside down; and so the main body of the church where people are seated received its name from the word for ship. This part of the church is called the nave. It extends from the railing in front of the first pew to the narthex. The Holy Table and the pulpit in the chancel, and the pews in the nave of our church are of African mahogany, stained walnut. Our church seats 460.

The dominant shades of blue in the windows convey the spiritual.

In early Christian churches the narthex was a separate part of the church in which catechisms were heard and penitents were received. It was near the entrance and was separated from the rest of the church by a railing or screen. In our church the narthex is completely separated from the nave and serves to shut out the noises and cares of the world from the quiet of the sanctuary. When people pass through the narthex and enter the nave conversation ceases as hearts and minds are joined in worship.

Plan to be seated in the pew at least five minutes before eleven, pray silently, and "think on these things".





[Click Here to Close this Window](#)

All information contained in this web site is the exclusive property of Bayside Presbyterian Church. © 2014
